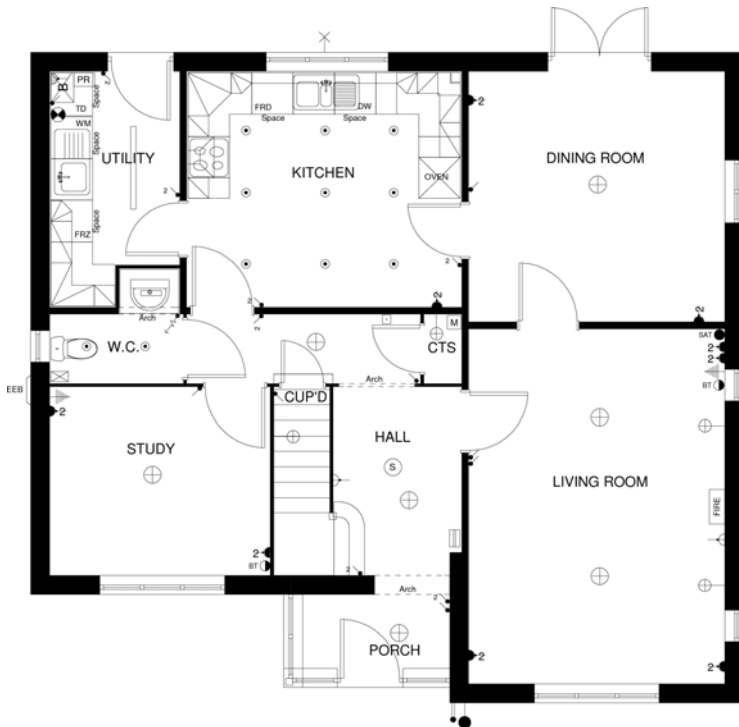


Our latest floorplans...

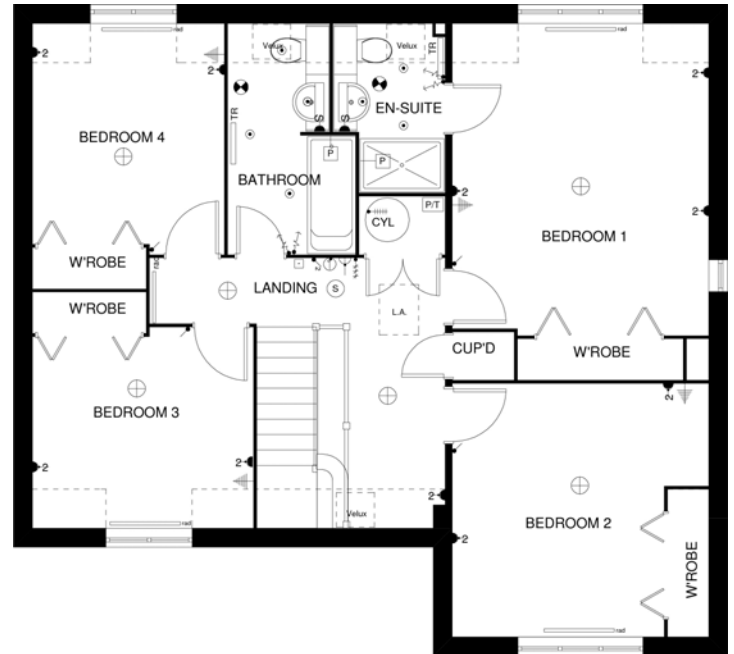
Update 05/02/2010

The Nightingale (plot 57 only) Stable Field, Hemsby Village



GROUND FLOOR PLAN
'NIGHTINGALE' HOUSE TYPE - HEMSBY

PLEASE NOTE:
The arch shown in the entrance hall
has now been omitted



FIRST FLOOR PLAN
'NIGHTINGALE' HOUSE TYPE - HEMSBY

Important Notes:-

1. *Our commitment to update continuously and improve the designs of our homes may mean that some amendments may not yet be incorporated in these plans.*
2. *These plans must be looked at in conjunction with our latest update sheet available on request.*
3. *Although we endeavour to notify customers of material changes, Norfolk Homes Ltd reserves the right to alter plans and specifications without notice.*
4. *All homes are offered subject to contract. Every care has been taken to ensure the accuracy of the information but these plans do not form part of any contract.*
5. *All plans are copyright to Norfolk Homes Ltd*
6. *Some homes will be built handed (a mirror image) to the plans shown. Plans with correct handing for a particular plot of interest can be prepared on request.*
7. *More detailed kitchen and bathroom plans are available upon request.*
8. *The plans shown are not to a particular scale but are dimensioned to help you.*
9. *Dimensions (when shown) are approximate (+/- 50mm)*

