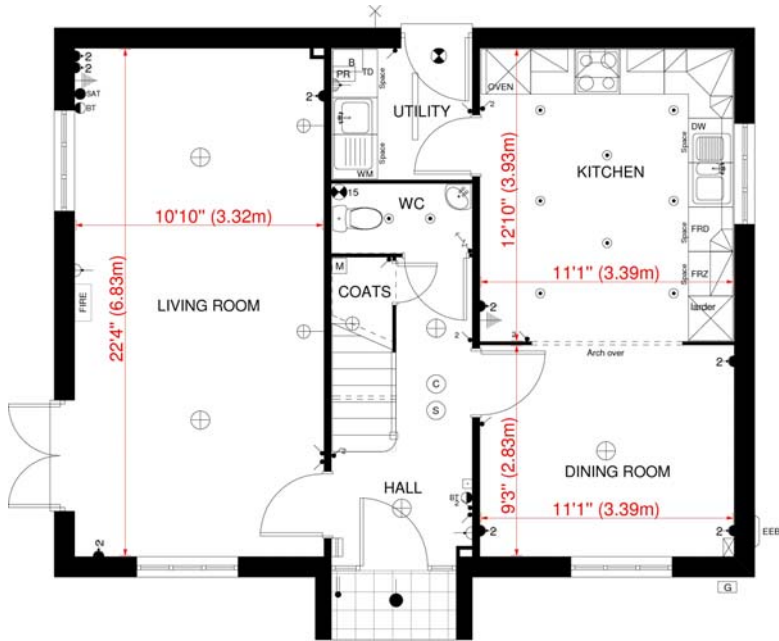


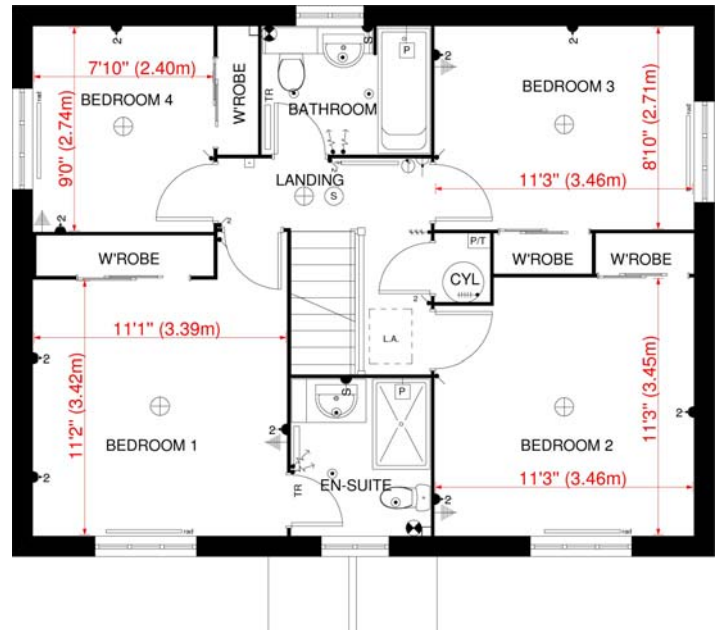
# Our latest floorplans...

Update04/02/2010

## The Addington 'A' Blue Sky Gardens, Bradwell



GROUND FLOOR PLAN  
'ADDINGTON 'A' HOUSE TYPE - BRADWELL



FIRST FLOOR PLAN  
'ADDINGTON 'A' HOUSE TYPE - BRADWELL

### Important Notes:-

1. Our commitment to update continuously and improve the designs of our homes may mean that some amendments may not yet be incorporated in these plans.
2. These plans must be looked at in conjunction with our latest update sheet available on request.
3. Although we endeavour to notify customers of material changes, Norfolk Homes Ltd reserves the right to alter plans and specifications without notice.
4. All homes are offered subject to contract. Every care has been taken to ensure the accuracy of the information but these plans do not form part of any contract.
5. All plans are copyright to Norfolk Homes Ltd
6. Some homes will be built handed (a mirror image) to the plans shown. Plans with correct handing for a particular plot of interest can be prepared on request.
7. More detailed kitchen and bathroom plans are available upon request.
8. The plans shown are not to a particular scale but are dimensioned to help you.
9. Dimensions shown are approximate (+/- 50mm)

